



B&C OUTERWEAR UNIT WHERE FUNCTION MEETS STYLE

DISCOVER COUNTLESS BUSINESS OPPORTUNITIES.

What is the B&C Outerwear Unit?

The B&C Outerwear Unit is a new approach to the outerwear market based on segmented business needs. Brought to you through a collection of appealing outerwear styles that combine great quality & service, this range is also affordably priced to offer maximum value.

Featuring contemporary qualitative designs inspired by the protective and functional attributes of genuine workwear inspired looks, this collection is characterised by quality fabrics, tailored fits and unique detailing, designed to meet the needs of outerwear user segments. All styles have been tested for outstanding decoration (print and embroidery) to better ensure great brand visibility for every business.

B&C OUTERWEAR UNIT

MADE TO BE SEEN

Each one of the B&C Outerwear Unit styles has been designed to offer the best solution in terms of brand visibility and impact:

- All fabrics have been tested to ensure that they deliver great results across a range of decoration techniques. (screen print, embroidery, transfer and sublimation)
- Equipped with hidden zips, these jackets give easy access for decoration on back, front and in some cases on sleeves too.
- Effective decoration area has been optimised on every style, to make sure you can make your brand or message stand out.

APPROVED

ALL B&C OUTERWEAR UNIT FABRICS
HAVE BEEN TESTED FOR DECORATION

- ✓ 100% polyester taffeta (210T & 300 T)
- ✓ 100% polyester pongee
- ✓ 100% polyester rip-stop
- ✓ 100% nylon 210T taffeta
- ✓ 100% polyester 330D Oxford
- ✓ 65% polyester / 35% cotton
- ✓ 96% polyester / 4% elastane - 2 & 3 Layers
- ✓ 96% polyester / 4% elastane - Mini rip-stop

TESTED FOR DECORATION

ALL IMAGES ARE EXCLUSIVELY OF DECORATION APPLIED TO B&C OUTERWEAR UNIT FABRICS

EMBROIDERY

100% POLYESTER RIP-STOP

96% POLYESTER - 4% ELASTANE - MINI RIP-STOP

NYLON 210 T TAFFETA



SCREEN PRINT

100% POLYESTER TAFFETA 300T

96% POLYESTER / 4% ELASTANE - 2 LAYERS

100% POLYESTER RIP-STOP



TRANSFER

100% POLYESTER OXFORD 330D

96% POLYESTER / 4% ELASTANE - 2 LAYERS

96% POLYESTER / 4% ELASTANE - 3 LAYERS



SUBLIMATION

100% POLYESTER TAFFETA 210T

100% POLYESTER OXFORD 330D

96% POLYESTER / 4% ELASTANE - 2 LAYERS



HEAVY WEIGHT JACKETS



B&C SUPERHOOD /MEN
P.312



B&C SUPERHOOD /WOMEN
P.313



B&C REAL+ /MEN
P.316



B&C REAL+ /WOMEN
P.317



B&C CORPORATE 3-IN-1
P.319

SOFTSHELL JACKETS



B&C HOODED SOFTSHELL /DUO
P.290 & 291



B&C HOODED SOFTSHELL /KIDS
P.383



B&C X-LITE SOFTSHELL /DUO
P.294 & 295



B&C ID.701 /DUO
P.298 & 299



B&C SHIELD SOFTSHELL PRO
P.301

MIDDLE WEIGHT JACKETS



B&C CREW BOMBER /MEN
P.324



B&C CREW BOMBER /WOMEN
P.325



B&C MULTI-ACTIVE /MEN
P.328



B&C MULTI-ACTIVE /WOMEN
P.329



B&C OCEAN SHORE
P.331

BODYWARMERS



B&C BODYWARMER EXPLORER
P.352



B&C ZEN+ /WOMEN
P.353



B&C BODYWARMER /MEN
P.353

B&C
OUTERWEAR UNIT
-
WHERE FUNCTION
MEETS STYLE

LIGHT WEIGHT JACKETS



B&C TROOPER /MEN
P.336



B&C TROOPER /WOMEN
P.337



B&C SIROCCO
P.340



B&C SIROCCO /WOMEN
P.340



B&C SIROCCO /KIDS
P.341



B&C AIR
P.343



B&C ID.501
P.346



B&C ID.501 /WOMEN
P.347

B&C PRO JACKETS



B&C SHELTER PRO
P.360



B&C EXPERT PRO
P.361



B&C SHIELD SOFTSHELL PRO
P.301

FLEECE



B&C COOLSTAR /MEN
P.354



B&C COOLSTAR /WOMEN
P.354



B&C WINDPROTEK
P.355



B&C ICEWALKER+
P.356



B&C TRAVELLER+
P.356



B&C HIGHLANDER+
P.356

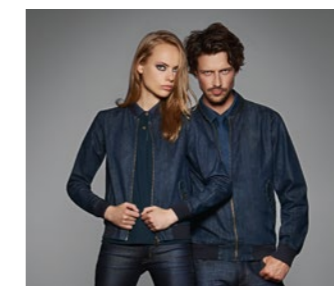


B&C ID.501
P.357



B&C ID.501 /WOMEN
P.357

B&C DNM JACKETS



B&C DNM SUPREMACY /DUO
P.362



B&C DNM FRAME /DUO
P.363

B&C

COLLECTION

OUTER
WEAR

FEEL THE DIFFERENCE OUT THERE.

HEAVY WEIGHT JACKETS

-

B&C Superhood /men _ p. 312

B&C Superhood /women _ p. 313

B&C Real+ /men _ p. 316

B&C Real+ /women _ p. 317

B&C Corporate 3-in-1 _ p. 319

B&C
COLLECTION

*Heavy weight puffer bomber
with fashionable contrasted inner lining*



B&C SUPERHOOD /DUO

JM 940 & JW 941

PROTECTION

Feather touch padding keeps you warm and comfortable.

Padded hood: obvious, detachable and adjustable. It adds style and ensures protection when the weather gets bad.

AC coated, showerproof, breathable and windproof outer shell.

Standing collar, full length internal stormflap and rib on cuffs + hem for wind protection.

STYLE & FIT

Contemporary bomber style.

Heavyweight puffer bomber with cotton feel 2x2 heavy rib on cuffs and hem.

The combination of a plain outer colour with contrasting inner lining adds a modern appearance, creating high value perception whilst not hindering identity application.

Retail cut for a contemporary image.

Bold accentuated premium accessories for an outstanding look.

Wide colour choice supports any idea and/or identity and creates strong visibility when needed.

MADE TO LAST

Heavy polyester rib (cotton feel) with elastane for better shape retention and durability.

High quality accessories and tone-on-tone SBS zippers.

DECORATION

Left chest and back panels with easy access hidden zips offer optimised customisation areas.

Fabric tested for the following decoration techniques – screen printing, heat transfer, sublimation (for white only), and embroidery.



JM 940

B&C SUPERHOOD /MEN

Heavy weight puffer bomber with fashionable contrasted inner lining

Outer layer: 100% polyester 300T taffeta
Inner layer: 100% polyester padded taffeta with feather touch padding

S - M - L - XL - XXL - XXXL
 1 pc/pack & 10 pcs/carton

Water-repellent, Showerproof, Windproof, Thermo-insulated

DU[♂]
 CONCEPT

1. Adjustable, removable padded hood
2. Left chest and back (shoulder to middle back) panels with hidden zips for easy decoration access
3. Standing collar, full length internal stormflap and cotton feel 2x2 rib on cuffs and hem for wind protection
4. Bomber style, retail cut for a contemporary image
5. Fabric tested for all print techniques and embroidery
6. 2 zipped hand pockets, 1 inner wallet pocket



BLACK WITH COBALT BLUE LINING



JW 941

B&C SUPERHOOD /WOMEN

Heavy weight puffer bomber with fashionable contrasted inner lining

Outer layer: 100% polyester 300T taffeta
Inner layer: 100% polyester padded taffeta with feather touch padding

XS - S - M - L - XL - XXL
 1 pcs/pack & 10 pcs/carton

Water-repellent, Showerproof, Windproof, Thermo-insulated, Feminine cut

DU[♀]
 CONCEPT

1. Adjustable, removable padded hood
2. Left chest and back (shoulder to middle back) panels with hidden zips for easy decoration access
3. Standing collar, full length internal stormflap and cotton feel 2x2 rib on cuffs and hem for wind protection
4. Bomber style, retail cut for a contemporary image
5. Fabric tested for all print techniques and embroidery
6. 2 zipped hand pockets



These styles are ideally suited for use in these environments:

PROMOTIONAL
 Street Marketing activities, Hostess / Stewards

MERCHANDISING

LICENSING

CORPORATE UNIFORM
 Transport & Delivery, Logistic & Distribution, Sales team, Mass Retail, Service industry

SPORTS & LEISURE
 Club & Team uniform, Team building, Coaching, Events

COLLEGE WEAR





B&C REAL+ /DUO JM 970 & JW 925

*Warm and comfortable
multi-activity winter parka*

PROTECTION

*Waterproof (1000 mm) parka
with critical seams taped.*

Concealed hood for extra protection when needed.

*High collar with chin protector keeps
your neck warm in blistering wind and cold.*

*Anti-pilling microfleece-lined collar
and half back add comfort and warmth.*

*Optimal protection against wind and rain
thanks to full front zip fastener with velcro
stormflap and velcro fastened adjustable cuffs.*

DECORATION

*Easy access for decoration
thanks to concealed zip opening
at the bottom of the lining.*

*Fabric tested for the following decoration techniques –
screen printing,
heat transfer,
sublimation (for white only),
and embroidery.*

STYLE & FIT

Contemporary parka style.

*Ergonomic sleeves and articulated elbows
for greater ease of movement.*

*2 front zipped pockets provide roomy
and secure storage.*

Tone-on-tone lining and accessories.

*Choice of colours and wide range of sizes
designed to support a range of uses.*



JM 970

B&C REAL+ /MEN

*Warm and comfortable
multi-activity winter parka*

Outer layer: 330D Oxford 100% polyester, waterproof 1000 mm
Inner layer: 100% polyester quilted taffeta padding
100% polyester anti-pilling micro-fleece (180g/m²)
on top back panel

S - M - L - XL - XXL - XXXL
1 pc/pack & 10 pcs/carton

Windproof, Waterproof, Thermo-insulated,
Water-repellent, Critical seams taped

DU♂
C♀NCEPT

- 1- Concealed 3 panelled hood with eyelets and flat drawstring with plastic ends
- 2- Full front zip fastener with velcro stormflap
- 3- Ergonomic sleeves & articulated elbow for ease of movement
- 4- 2 front zipped pockets
- 5- 1 inner zipped wallet pocket
- 6- Adjustable cuffs with velcro



JW 925

B&C REAL+ /WOMEN

*Warm and comfortable
multi-activity winter parka*

Outer layer: 330D Oxford 100% polyester, waterproof 1000 mm
Inner layer: 100% polyester quilted taffeta padding
100% polyester anti-pilling micro-fleece (180 g/m²)
on top back panel

XS - S - M - L - XL - XXL
1 pc/pack & 10 pcs/carton

Windproof, Waterproof, Thermo-insulated,
Water-repellent, Critical seams taped

DU♂
C♀NCEPT

- 1- Concealed 3 panelled hood with eyelets and flat drawstring with plastic ends
- 2- Full front zip fastener with velcro stormflap
- 3- Ergonomic sleeves & articulated elbow for ease of movement
- 4- 2 front zipped pockets
- 5- 1 inner zipped wallet pocket
- 6- Adjustable cuffs with velcro



These styles are ideally suited for use in these environments:

PROMOTIONAL
Meetings & Conferences,
Street Marketing activities

MERCHANDISING

CORPORATE UNIFORM
Sales team, Security,
Information Point staff,
Valet services

LIGHT WORKWEAR
Security, Foremen, Architects

SPORTS & LEISURE
Team building, Events



B&C CORPORATE 3-IN-1

JU 873



PROTECTION

Waterproof (5000 mm) parka with critical seams taped and a windproof outer shell for optimal protection against rain, snow and wind.

Ultra protective hood: concealed in the collar and ergonomically designed to stay out of your way when not needed.

Outer parka with diamond mesh lining to improve breathability and comfort.

Inner jacket made of anti-pilling micro-fleece for extra warmth (can be worn alone).

Standing collar, full length external stormflap with studs and cuffs with velcro closing, for wind protection.

DURABILITY

Durable 100% Polyester Radiance Pongee fabric, smooth to the touch with a premium look.

Reinforced seams with topstitches for enhanced durability.

Long lasting high quality SBS zippers.

STYLE AND FIT

Modern 3-in-1 parka, adaptable for every season, wear it with or without the inner fleece jacket.

Adjustable bottom hem with drawstring and ergonomic sleeve design with adaptable cuffs provide a comfortable fit.

Contemporary functional look.

Multiple pockets.

DECORATION

Zip at lower back for easy and full decoration access (front - back - sleeves).

Fabric tested for the following decoration techniques - screen printing, heat transfer, and embroidery.

JU 873

B&C CORPORATE 3-IN-1

Modern multi-use hooded 3-in-1 parka designed to protect in all weather conditions

OUTER JACKET:

Outer layer: 100% Premium polyester pongee

Inner layer: Body lining: 100% polyester mesh,
Sleeve lining: 100% polyester 190T taffeta

INNER JACKET: 100% polyester anti-pilling micro-fleece (180g/m²)

XS - S - M - L - XL - XXL - XXXL

1 pc/pack & 10 pcs/carton

Windproof, Waterproof 5000 mm, Thermo-insulated,
Water-repellent, Critical seams taped



1. Ultra protective hood concealed in the collar, ergonomically designed
2. Adjustable bottom hem with drawstring and ergonomic sleeve design with adaptable cuffs provide a comfortable fit
3. Zip-in fleece with 5 point change system
4. 2 zipped hand pockets with overlap, zipped chest pocket

This style is ideally suited for use in these environments:

MERCHANDISING

LICENSING

CORPORATE UNIFORM

Sales team, Security,
Valet services, Service industry

LIGHT WORKWEAR

SME employees, Security,
Technicians, Foremen, Architects



B&C

COLLECTION

FEEL GOOD OUT THERE.

MIDDLE WEIGHT JACKETS

B&C Crew Bomber /men _ p. 324

B&C Crew Bomber /women _ p. 325

B&C Multi-Active /men _ p. 328

B&C Multi-Active /women _ p. 329

B&C Ocean Shore _ p. 331

B&C
COLLECTION

*Middle weight bomber jacket
with comfortable padding and concealed hood*



B&C
CREW
BOMBER
DUO

B&C CREW BOMBER /DUO

JM 961 & JW 962

PROTECTION

Waterproof (5000 mm) and windproof outer shell.

Quilted padding for extra warmth.

Ergonomic adjustable hood concealed in collar with elasticated cord and two easily adjustable stoppers.

Standing collar, full length internal stormflap and rib on cuffs and hem ensure wind protection.

Forward shoulder seams for better comfort and water protection.

MADE TO LAST

Double needle topstitching for extra durability.

Cuffs and hem in heavy polyester rib with elastane for better shape retention and durability.

Long lasting high quality tone-on-tone SBS zipper.

STYLE & FIT

Middleweight bomber style (jacket) with cotton feel heavy rib on cuffs and bottom hem.

Ergonomically designed for a comfortable fit.

Contemporary and robust look, designed to support corporate and promotional needs.

Matt fabric with soft handfeel for comfort and a premium look.

DECORATION

Easy access for decoration thanks to concealed zip opening at the bottom of the lining

Fabric tested for the following decoration techniques – screen printing, heat transfer, and embroidery.



JM 961

B&C CREW BOMBER /MEN

*Middle weight bomber jacket
with comfortable padding
and concealed hood*

Outer layer: 100% polyester pongee
Inner layer: 100% polyester quilted taffeta for extra warmth 190 g/m²

S - M - L - XL - XXL - XXXL
1 pc/pack & 15 pcs/carton

Waterproof 5000 mm, Windproof

DU[♂]
C[♀]ONCEPT

- 1. Contemporary cotton feel heavy rib on cuffs and bottom hem
- 2. Standing collar and full length internal stormflap ensure wind protection
- 3. Forward shoulder seams for better comfort and water protection
- 4. Tone-on-tone, high quality SBS zippers
- 5. 2 zipped hand pockets with overlap
- 6. 1 inner wallet pocket with velcro closing tabs



JW 962

B&C CREW BOMBER /WOMEN

*Middle weight bomber jacket
with comfortable padding
and concealed hood*

Outer layer: 100% polyester pongee
Inner layer: 100% polyester quilted taffeta for extra warmth 190 g/m²

XS - S - M - L - XL - XXL
1 pc/pack & 10 pcs/carton

Waterproof 5000 mm, Windproof, Feminine cut

DU[♂]
C[♀]ONCEPT

- 1. Contemporary cotton feel heavy rib on cuffs and bottom hem
- 2. Standing collar and full length internal stormflap ensure wind protection
- 3. Forward shoulder seams for better comfort and water protection
- 4. Tone-on-tone, high quality SBS zippers
- 5. 2 zipped hand pockets with overlap



These styles are ideally suited for use in these environments:

PROMOTIONAL
Street Marketing activities

MERCHANDISING

CORPORATE UNIFORM
Transport & Delivery,
Logistic & Distribution,
Sales team, Security,
Valet services, Mass Retail,
Service industry

LIGHT WORKWEAR
SME employees, Security,
Technicians, Mechanics,
Craftsmen, Foremen, Building
& Construction, Architects

SPORTS & LEISURE
Club & Team uniform,
Coaching, Events

COLLEGE WEAR





B&C MULTI-ACTIVE /DUO

JM 825 & JW 826

*Middle weight multi-use jacket
with comfortable fleece lining*

PROTECTION

Micro-fleece lining for extra warmth.

PU Coating for better water protection and breathability.

*Forward seam on shoulder for enhanced comfort
and showerproofness.*

*Ergonomic adjustable hood concealed in collar,
with elasticated cord and two easy-to-adjust stoppers.*

Standing collar for wind protection.

STYLE & FIT

Ergonomic lines offer freedom of movement.

*Essential contemporary look supports broad
range of uses.*

*Wide colour choice for more flexibility – exclusively
available in white.*

DECORATION

*Zip at lower back for easy full decoration access
(front – back – sleeves).*

Maximised decoration areas.

*Fabric tested for the following decoration techniques –
screen printing,
heat transfer,
sublimation (for white only)
and embroidery.*



JM 825

B&C MULTI-ACTIVE /MEN

Middle weight multi-use jacket with comfortable fleece lining

Outer layer: 100% polyester 210T taffeta
Body lining: 100% polyester anti-pilling micro-fleece
Sleeve lining: 100% polyester quilted taffeta

S - M - L - XL - XXL - XXXL
 5 pcs/pack & 30 pcs/carton

Showerproof, Windproof, Anti-pilling micro-fleece

DU♂
 CONCEPT

- 1- Concealed hood
- 2- Contrasted micro-fleece lining for extra warmth
- 3- Standing collar, adjustable hem and cuffs for great protection
- 4- PU coating for better water protection and breathability
- 5- Forward seam on shoulder for better comfort and waterproofness
- 6- 2 zipped hand pockets with overlap
- 7- 1 inner wallet pocket with velcro closing tab



JW 826

B&C MULTI-ACTIVE /WOMEN

Middle weight multi-use jacket with comfortable fleece lining

Outer layer: 100% polyester 210T taffeta
Body lining: 100% polyester anti-pilling micro-fleece
Sleeve lining: 100% polyester quilted taffeta

XS - S - M - L - XL - XXL
 5 pcs/pack & 10 pcs/carton

Showerproof, Windproof, Anti-pilling micro-fleece, Feminine cut

DU♂
 CONCEPT

- 1- Concealed hood
- 2- Contrasted micro-fleece lining for extra warmth
- 3- Standing collar, adjustable hem and cuffs for great protection
- 4- PU coating for better water protection and breathability
- 5- Forward seam on shoulder for better comfort and waterproofness
- 6- 2 zipped hand pockets with overlap



These styles are ideally suited for use in these environments:

- | | |
|--|--|
| PROMOTIONAL
Events, Meetings & Conferences, Street Marketing activities, Hostess / Stewards | LIGHT WORKWEAR
SME employees, Security, Technicians, Gardening & Landscaping |
| MERCHANDISING | SPORTS & LEISURE
Club & Team uniform, Team building, Coaching, Events |
| LICENSING | COLLEGE WEAR |
| CORPORATE UNIFORM
Transport & Delivery, Logistic & Distribution, Sales team, Security, Valet services, Mass Retail | |



B&C
 COLLECTION
 OUTER
 WEAR
 /UNIT

JACKETS &
 FLEECE



B&C OCEAN SHORE JU 824

PROTECTION

Micro-fleece lining for extra warmth.

Adjustable storm hood concealed in collar, with easy-to-pull tag.

Standing collar for wind protection.

Adjustable cuffs with velcro closing tabs.

STYLE & FIT

Front covered full zip opening gives straight, clean lines.

Essential contemporary look supports broad range of uses.

DECORATION

Zip in lining for easy decoration access.

Fabric tested for the following decoration techniques - screen printing, heat transfer, and embroidery.



JU 824

B&C OCEAN SHORE

Contemporary middle weight jacket with thermo micro-fleece lining

Outer layer: 100% nylon taffeta | Waterproof

Body lining: 100% polyester micro-fleece

Sleeve lining: 100% padded polyester

S - M - L - XL - XXL - XXXL*

5 pcs/pack & 30 pcs/carton

Windproof, Showerproof, Thermo-insulated, Water-repellent



- 1- Adjustable storm hood concealed in collar
- 2- Micro-fleece lining for extra warmth
- 3- Standing collar for great protection
- 4- Front covered full zip opening with velcro closing tabs and zip pull
- 5- Adjustable cuffs with velcro closing tabs
- 6- Open hem with elasticated cord, 2 stoppers and easy-to-pull rings
- 7- 2 front pockets and 1 inner wallet pocket

This style is ideally suited for use in these environments:

PROMOTIONAL

Events, Street Marketing activities, Hostess / Stewards

MERCHANDISING

LICENSING

CORPORATE UNIFORM

Transport & Delivery, Logistic & Distribution, Sales team, Security, Valet services, Mass Retail

SPORTS & LEISURE

Club & Team uniform, Team building, Coaching, Events



BLACK *

NAVY *

RED *

DARK GREY

B&C

COLLECTION

FEEL HAPPY OUT THERE.

OUTER
WEAR
/UNIT

LIGHT WEIGHT JACKETS

B&C Trooper /men _ p. 336

B&C Trooper /women _ p. 337

B&C Sirocco _ p. 340

B&C Sirocco /women _ p. 340

B&C Sirocco /kids _ p. 341

B&C Air _ p. 343

B&C ID.601 _ p. 346

B&C ID.601 /women _ p. 347

B&C
COLLECTION

JACKETS &
FLEECE

B&C TROOPER /DUO

JM 963 & JW 964

*Trendy light weight bomber jacket
with ergonomic concealed hood*

PROTECTION

*Showerproof AC coating,
breathable and windproof outer shell.*

*Diamond mesh lining improves breathability
and comfort.*

*Ergonomic hood (adjusted with elastic at the top)
concealed in the collar.*

Ribbed cuffs and hem for wind protection.

*Forward shoulder seams for better comfort
and water protection.*

STYLE & FIT

*Light weight bomber style with cotton feel
heavy rib on cuffs and bottom hem.*

*The combination of a plain outer colour with contrasting
inner lining adds a modern appearance, creating a high value
perception whilst not hindering identity application.*

Trendy and retail cut for a contemporary image.

Soft handfeel fabric adds premium perception.

*Wide colour choice will support any idea and/or identity
and create strong visibility when needed.*

Bomber shape collar.

MADE TO LAST

Reinforced topstitched seams for extra durability.

*Polyester heavy rib with elastane for better shape
retention and durability.*

Long lasting high quality tone-on-tone SBS zipper.

DECORATION

*Zip at lower back for easy full decoration access
(front - back - sleeves).*

*Fabric tested for the following decoration techniques -
screen printing,
heat transfer,
sublimation (for white only),
and embroidery.*

JM 963

B&C TROOPER /MEN

Trendy light weight bomber jacket with ergonomic concealed hood

Outer layer: 100% polyester 210T taffeta
Body lining: 100% polyester mesh
Sleeve lining: 100% polyester taffeta

S - M - L - XL - XXL - XXXL
 5 pcs/pack & 30 pcs/carton

Showerproof, Windproof

DU♂
 CONCEPT

- 1- Fashionable contrasted diamond mesh lining, improves breathability and comfort
- 2- Self fabric inner collar
- 3- Contemporary cotton feel heavy rib on cuffs and bottom hem
- 4- Forward shoulder seams for better comfort and water protection
- 5- 2 zipped hand pockets
- 6- 1 inner wallet pocket with velcro closing tabs



B&C
 COLLECTION

JW 964

B&C TROOPER /WOMEN

Trendy light weight bomber jacket with ergonomic concealed hood

Outer layer: 100% polyester 210T taffeta
Body lining: 100% polyester mesh
Sleeve lining: 100% polyester taffeta

XS - S - M - L - XL - XXL
 5 pcs/pack & 10 pcs/carton

Showerproof, Windproof, Feminine cut

DU♂
 CONCEPT

- 1- Fashionable contrasted diamond mesh lining, improves breathability and comfort
- 2- Self fabric inner collar
- 3- Contemporary cotton feel heavy rib on cuffs and bottom hem
- 4- Forward shoulder seams for better comfort and water protection
- 5- 2 zipped hand pockets



These styles are ideally suited for use in these environments:

PROMOTIONAL

Events, Street Marketing activities, Hostess / Stewards, Gifts

MERCHANDISING

LICENSING
CORPORATE UNIFORM
 Transport & Delivery, Logistic & Distribution, Sales team, Information Point staff, Valet services, Mass Retail, Service industry

SPORTS & LEISURE

Club & Team uniform, Team building, Coaching, Events

COLLEGE WEAR





B&C SIROCCO /DUO /KIDS

JU 800, JW 902 & JK 950

*The Market Reference
Windbreaker*

PROTECTION

Showerproof and water-repellent essential windbreaker.

*Adjustable storm hood concealed
in the collar for added protection.*

Elasticated cuffs.

STYLE & FIT

*Essential windbreaker style, foldaway jacket
in pocket with double slider zip.*

*Wide colour palette and range of sizes makes
it versatile for a wide range of uses.*

Adjustable bottom hem for a better fit.

Kid's style completes the line.

DECORATION

*Fabric tested for the following decoration techniques –
screen printing,
heat transfer,
and embroidery.*

JU 800 & JW 902

B&C SIROCCO & B&C SIROCCO /WOMEN

*The Market Reference
Windbreaker*

100% nylon taffeta

♂ S - M - L - XL - XXL - XXXL
10 pcs/pack & 50 pcs/carton

♀ XS - S - M - L - XL - XXL
10 pcs/pack & 30 pcs/carton

Water-repellent, Showerproof, Windproof

DU♂
C♀NCEPT

1. Full zip opening with zip pull
2. Adjustable storm hood concealed inside the collar
3. ♂ 1 front pocket
♀ 2 front pockets
4. Fold-away jacket (K-way® system) in pocket with double slider zip
5. Adjustable bottom hem with drawcord

These styles are ideally suited for use in these environments:

PROMOTIONAL
Events, Meetings & Conferences, Street Marketing activities, Hostess / Stewards, Give Aways

MERCHANDISING

LICENSING
SPORTS & LEISURE
Club & Team uniform, Team building, Events, Coaching
COLLEGE WEAR



Discover the B&C Basic offer on p. 384

JK 950

B&C SIROCCO /KIDS

*The Market Reference
Windbreaker*

100% nylon taffeta

3/4 - 5/6 - 7/8 - 9/11 - 12/14
10 pcs/pack & 50 pcs/carton

Water-repellent, Showerproof, Windproof

1. Full zip opening with zip pull
2. Hood concealed inside the collar
3. Fold-away jacket (K-way® system) in pocket with double slider zip
4. Adjustable bottom hem with 2 velcro tabs

This style is ideally suited for use in these environments:

PROMOTIONAL
Give Aways

MERCHANDISING
LICENSING

SPORTS & LEISURE
Club & Team uniform, Team building, Events
SCHOOLWEAR



JACKETS & FLEECE



B&C AIR JU 801

PROTECTION

Windproof, showerproof and water-repellent lined windbreaker.

Polyester mesh lining for better wind protection.

Adjustable storm hood concealed in the collar for added protection.

Elasticated cuffs.

STYLE & FIT

Classic windbreaker style, foldaway jacket in pocket with double slider zip.

Standing collar adds to contemporary look.

Adjustable bottom hem for a better fit.

DECORATION

Easy access for decoration via a zip in the lining.

Fabric tested for the following decoration techniques - screen printing, heat transfer, and embroidery.



JU 801

B&C AIR

The windbreaker with lining

Outer layer: 100% nylon taffeta
Body lining: 100% polyester mesh
Sleeve lining: 100% polyester taffeta

S - M - L - XL - XXL - XXXL*
5 pcs/pack & 30 pcs/carton

Windproof, Showerproof, Water-repellent



1. Adjustable storm hood concealed in collar
2. Standing collar for great protection
3. Front zip opening with zip pull
4. Elasticated cuffs
5. Adjustable bottom hem with drawcord
6. 2 front pockets with zips
7. Fold-away jacket (K-Way® system) in right pocket with double slider zip

This style is ideally suited for use in these environments:

PROMOTIONAL
Events, Meetings & Conferences, Street Marketing activities, Hostess / Stewards, Gifts, Give Aways

MERCHANDISING

LICENSING
LIGHT WORKWEAR
Gardening & Landscaping, Building & Construction

SPORTS & LEISURE
Club & Team uniform, Team building, Coaching, Events



* COLOURS AVAILABLE IN XXXL



B&C ID.601 /DUO JU 160 & JW 161

Modern lined windbreaker

PROTECTION

Windproof, showerproof, thermo-insulated and water-repellent modern lined windbreaker with polyester tricot lining for extra comfort and warmth.

Forward seams on shoulders for better protection.

Ergonomic hood concealed in the collar, with velcro closing tabs.

DECORATION

Open back for easy decoration access.

Fabric tested for the following decoration techniques - screen printing, heat transfer, sublimation (for white only), and embroidery.

STYLE & FIT

Contemporary windbreaker style, with comfortable lining.

Self fabric lining inside the collar.

Ergonomic side panels.

Adjustable bottom hem for a better fit.



JU I60

B&C ID.601

Modern lined windbreaker

Outer layer: 100% polyester 210T taffeta

Body lining: 100% polyester tricot

Sleeves lining: 100% polyester

S - M - L - XL - XXL - XXXL
5 pcs/pack & 30 pcs/carton

Windproof, Showerproof, Thermo-insulated, Water-repellent

DU♂
C♀NCEPT

- 1· Ergonomic hood concealed in collar with velcro closing tabs
- 2· Self fabric lining inside the collar
- 3· Forward seams on shoulders for better protection
- 4· Front zip opening with zip pull
- 5· Adjustable bottom hem with drawcord
- 6· 2 front pockets with overlap and 1 inner wallet pocket

Discover the B&C Basic offer on p. 384



JW I61

B&C ID.601 /WOMEN

Modern lined windbreaker

Outer layer: 100% polyester 210T taffeta

Body lining: 100% polyester tricot

Sleeves lining: 100% polyester

XS - S - M - L - XL - XXL
5 pcs/pack & 30 pcs/carton

Windproof, Showerproof, Thermo-insulated, Water-repellent, Feminine cut

DU♂
C♀NCEPT

- 1· Ergonomic hood concealed in collar with velcro closing tabs
- 2· Self fabric lining inside the collar
- 3· Forward seams on shoulders for better protection
- 4· Front zip opening with zip pull
- 5· Adjustable bottom hem with drawcord
- 6· 2 front pockets with overlap

These styles are ideally suited for use in these environments:

PROMOTIONAL

Events, Meetings & Conferences, Street Marketing activities, Hostess / Stewards

MERCHANDISING

LICENSING

CORPORATE UNIFORM

Logistic & Distribution, Sales team, Security, Valet services, Mass Retail

LIGHT WORKWEAR

Technicians, Building & Construction

SPORTS & LEISURE

Club & Team uniform, Team building, Coaching, Events

COLLEGE WEAR



COLOUR IMPACT



S/S

ANY TIME

MESSAGE IMPACT



JACKETS &
FLEECE

ANY SEASON

A/W

B&C
COLLECTION

OUTER
WEAR
/UNIT

FEEL WARM OUT THERE.

B&C BODYWARMERS

-

B&C Bodywarmer Explorer _ p. 352

B&C Bodywarmer /men _ p. 353

B&C Zen+ /women _ p. 353

B&C FLEECE

-

B&C Coolstar /men _ p. 354

B&C Coolstar /women _ p. 354

B&C WindProtek _ p. 355

B&C Icewalker + _ p. 356

B&C Highlander + _ p. 356

B&C Traveller + _ p. 356

B&C ID.501 _ p. 357

B&C ID.501 /women _ p. 357

B&C PRO

-

B&C Shelter Pro _ p. 360

B&C Expert Pro _ p. 361

B&C
COLLECTION

B&C BODYWARMER EXPLORER

Multifunctional bodywarmer

Outer layer: 65% polyester - 35% cotton
Inner layer: 100% heavy padded polyester lining for extra warmth

S - M - L - XL - XXL - XXXL*
 1 pc/pack & 10 pcs/carton

Windproof, Showerproof, Thermo-insulated, Water-repellent

- 1. Adjustable wind-stoppers in armholes with elasticated cord and stoppers
- 2. Front covered full zip with press stud fastening
- 3. 5 outer pockets, including 2 with zips
- 4. 2 extra outer pencil pockets
- 5. 1 inner wallet pocket
- 6. Open hem and longer back

This style is ideally suited for use in these environments:

- | | |
|---|---|
| CORPORATE UNIFORM
Transport & Delivery,
Logistic & Distribution | Building & Construction,
Architects |
| LIGHT WORKWEAR
SME employees, Technicians,
Mechanics, Craftsmen,
Foremen, Gardening
and Landscaping, | SPORTS & LEISURE
Club & Team uniform,
Events |



B&C BODYWARMER /MEN B&C ZEN+ /WOMEN

Trendy "down" bodywarmer

Outer layer: 100% nylon taffeta
 ♂ **Inner layer:** 100% padded polyester lining (200 g/m²)
 ♀ **Inner layer:** 100% padded polyester taffeta with feather touch

♂ S - M - L - XL - XXL - XXXL*
 5 pcs/pack & 10 pcs/carton
 ♀ XS - S - M - L - XL - XXL
 1 pc/pack & 10 pcs/carton

Windproof, Showerproof, Thermo-insulated, Water-repellent

**DU♂
C♀NCEPT**

- 1. 2 front pockets
- ♂ 2. Padded hood with feather touch, removable with zip
- ♀ 3. Adjustable bottom hem (with drawcord and stoppers)

These styles are ideally suited for use in these environments:

- | | |
|--|---|
| PROMOTIONAL
Events, Meetings & Conferences, Street Marketing activities, Hostess / Stewards, Gifts | Information Point staff, Valet services, Mass Retail |
| MERCHANDISING | LIGHT WORKWEAR
Technicians, Mechanics |
| LICENSING | SPORTS & LEISURE
Club & Team uniform, Team building, Coaching, Events |
| CORPORATE UNIFORM
Transport & Delivery, Logistic & Distribution, | |



JACKETS & FLEECE

FM 717 & FW 752

B&C COOLSTAR /MEN B&C COOLSTAR /WOMEN

Light weight ergonomic full zip
micro-fleece

100% polyester anti-pilling micro-fleece (144 filaments)
♂ 170 g/m² | S - M - L - XL - XXL - XXXL
♀ 170 g/m² | XS - S - M - L - XL - XXL
5 pcs/pack & 15 pcs/carton

Windproof, Thermo-insulated, Water-repellent

DU♂
CONCEPT



MINIMUM VITAL SPACE, MAXIMUM WARMTH

The B&C Coolstar /duo is part of the exclusive
B&C Light Pack Concept
High Insulation + lightweight + highly packable



B&C 144 MICRO-FLEECE FABRIC

Stay warm with the real 144 filaments B&C micro-fleece
that provides the extra warmth and comfort needed

- 1· Performance fit: ergonomic shape and articulated set-in sleeves
- 2· Chin protector
- 3· Full zip opening with zip pull
- 4· 2 front pockets with zip pull



MEDIA PLAYER COMPATIBLE:

small opening for earphone cord in right front pocket
+ hidden earphone loop inside the collar



BLACK NAVY STEEL GREY



354.

THE ENGINEERED FLEECE



FU 749

B&C WINDPROTEK

THE ENGINEERED FLEECE

100% polyester anti-pilling micro-fleece
(144 filaments) + **breathable bonded membrane**

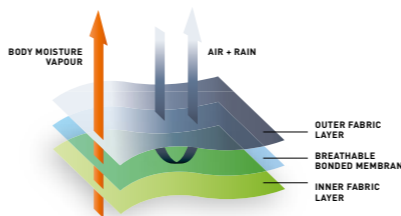
320 g/m² | XS - S - M - L - XL - XXL - XXXL*
1 pc/pack & 10 pcs/carton

Windproof, Waterproof 5000 mm, Thermo-insulated, Water-repellent



B&C 144 MICRO-FLEECE FABRIC

Stay warm with the real 144 filaments B&C micro-fleece
that provides the extra warmth and comfort needed.



B&C WINDPROTEK MEMBRANE

100% protection against wind, water and cold.
The B&C 144 micro-fleece fabric combined
with a **windproof/waterproof and breathable
membrane** eliminates the need for an additional layer.



BLACK* NAVY* RED* OLIVE

* COLOURS AVAILABLE IN XXXL

**RAW
FLEECE**



FU 703

**B&C
ICEWALKER**

+

100% polyester anti-pilling fleece
300 g/m² | XS - S - M - L - XL - XXL - XXXL*
5 pcs/pack & 15 pcs/carton



* COLOURS AVAILABLE IN XXXL

FU 705

**B&C
TRAVELLER**

+

100% polyester anti-pilling fleece
300 g/m² | XS - S - M - L - XL - XXL - XXXL*
5 pcs/pack & 15 pcs/carton



* COLOURS AVAILABLE IN XXXL

FU 704

**B&C
HIGHLANDER**

+

100% polyester anti-pilling fleece
300 g/m² | XS - S - M - L - XL - XXL - XXXL*
5 pcs/pack & 15 pcs/carton



* COLOURS AVAILABLE IN XXXL

FU 150 & FW 151

**B&C ID.501
& B&C ID.501
/WOMEN**

100% polyester anti-pilling micro-fleece
♂ 280 g/m² | XS - S - M - L - XL - XXL - XXXL - 4XL*
♀ 280 g/m² | XS - S - M - L - XL - XXL - XXXL*
5 pcs/pack & 15 pcs/carton

Discover
the B&C Basic offer
on p. 384



WHITE

BLACK*



NAVY*

RED*



PUMPKIN ORANGE

ATOLL



ROYAL BLUE*

DARK GREY*



FOREST GREEN*

PIXEL LIME

* COLOURS AVAILABLE IN XXXL



PRO

DESIGNED TO WORK AS HARD AS YOU DO

Effective weather protection must be combined with functional designs and comfortable fits to make sure outdoor teams can deliver optimal performance, whatever the job, in any season.

The B&C PURE PRO Jackets have been created to meet the heavy-duty needs of teams in a range of industries, from construction to engineering, where protection from the elements goes hand in hand with functionality and durability.

Made from high quality fabrics and including details such as multiple pockets, shoulder and elbow reinforcements and durable zips, these comfortable jackets are also designed to be easily decorated so your company brand stands out.



**OUTER
WEAR
/UNIT**

B&C SHELTER PRO JU C41

Highly functional heavy PRO jacket with ergonomic concealed hood

B&C EXPERT PRO

JU C40

Highly functional heavy PRO bodywarmer

JU C41

B&C SHELTER PRO

Highly functional heavy PRO jacket with ergonomic concealed hood

Fabric outer: 100% polyester rip-stop
Fabric inner: 100% heavy padded polyester lining (200 g/m²)

S - M - L - XL - XXL - XXXL - XXXXL
 1 pc/pack & 10 pcs/carton

Waterproof 5000 mm, Windproof, Thermo-insulated

1. 12 multi-function pockets
2. Longer back for freedom of movement, warmth and protection when bending or kneeling
3. Reflective piping at front and back panels for enhanced visibility and safety
4. Rip-stop outer shell ensures increased resistance to abrasion and tears
5. 1 external smartphone pocket with velcro fastening, 3 extra outer pencil pockets, 2 double entry front pockets with side fleece handwarmer access
6. 1 inside patched wallet pocket
7. 1 arm pocket with zip closure
8. Ergonomic zip pullers for easy access
9. Adjustable cuffs with velcro tabs for better fitting body shapes
10. Easy access for decoration thanks to the zip opening at the bottom of back lining
11. Fabric tested for all printing techniques and embroidery

This style is ideally suited for use in these environments:

LIGHT WORKWEAR

SME employees, Security, Technicians, Mechanics, Craftsmen, Foremen, Gardening & Landscaping, Building & Construction, Architects



JU C40

B&C EXPERT PRO

Highly functional heavy PRO bodywarmer

Outer layer: 100% polyester rip-stop windproof, water-repellent & waterproof
Inner layer: 100% heavy padded polyester lining (200 g/m²)
 Micro-fleece lining for pockets & collar

S - M - L - XL - XXL - XXXL - XXXXL
 1 pc/pack & 10 pcs/carton

Waterproof 5000 mm, Windproof, Water-repellent

1. Micro-fleece lined neck for extra warmth & comfort
2. Deep cut armholes with elasticated weather protectors for added comfort and warmth
3. Pocket with zip and zip pull for easy access
4. Longer back with reinforced bottom of back for: durability, freedom of movement, warmth & extra protection to lower back when bending, kneeling or sitting
5. Bellow front pockets with double entry and side fleece handwarmer access for extra warmth. 3 extra outer pencil pockets
6. Easy to access smartphone pocket with velcro closing tabs
7. Reflective piping at front for enhanced visibility
8. Forward shoulder seams to avoid friction for extra comfort & extended durability
9. Front covered full zip with chin protector & ergonomic zip pull with 3 velcro & 2 press-stud closing stormflap
10. Easy access for decoration thanks to the zip opening at the bottom of back lining

This style is ideally suited for use in these environments:

CORPORATE UNIFORM

Transport & Delivery, Logistic & Distribution

LIGHT WORKWEAR

SME employees, Security, Technicians Mechanics, Craftsmen, Foremen, Gardening and Landscaping, Building & Construction, Architects



JACKETS & FLEECE



B&C DNM JACKETS

THE DENIM ICONS



It's the return of dark indigo blue and raw denim twill!
We've reinterpreted classic and iconic denim styles, featuring unique details such as a reverse denim finish and metallic accessories in these 4 exceptionally designed B&C DNM Jackets.

What's more, they are 100% printable thanks to the 100% cotton denim twill which offers a smooth, even surface for decoration.



B&C DNM Supremacy /women JW D15
OUT: Heavyweight denim (12 OZ)
 100% cotton | Garment wash
LINING: Front and back:
 65% polyester, 35% cotton
 Sleeves: 100% polyester taffeta
 XS - S - M - L - XL - XXL
 1 pc/pack & 20 pcs/carton
 FITTED

B&C DNM Supremacy /men JM D14
OUT: Heavyweight denim (12 OZ)
 100% cotton | Garment wash
LINING: Front and back:
 65% polyester, 35% cotton
 Sleeves: 100% polyester taffeta
 S - M - L - XL - XXL - XXXL
 1 pc/pack & 20 pcs/carton
 MEDIUM FIT

DUO
DEEP BLUE DENIM

DUO
CONCEPT



B&C DNM
A DENIM VISION OF B&C


B&C DNM Frame /men JM D10
Heavyweight denim (12 OZ)
 100% cotton | Garment wash
 S - M - L - XL - XXL - XXXL
 1 pc/pack & 20 pcs/carton
 MEDIUM FIT

DUO
DEEP BLUE DENIM

DUO
CONCEPT

1. REVERSE DENIM FINISH AT CHEST POCKET
 2. BACK: METALLIC BUTTON ON WAISTBAND





B&C DNM Frame /women JW D11
Heavyweight denim (12 OZ)
 100% cotton | Garment wash
 XS - S - M - L - XL - XXL
 1 pc/pack & 20 pcs/carton
 FITTED

DUO
DEEP BLUE DENIM

DUO
CONCEPT

1. FRONT: FASHIONABLE FOLDS WITH BARTACKS
 2. BACK: METALLIC BUTTON ON WAISTBAND

